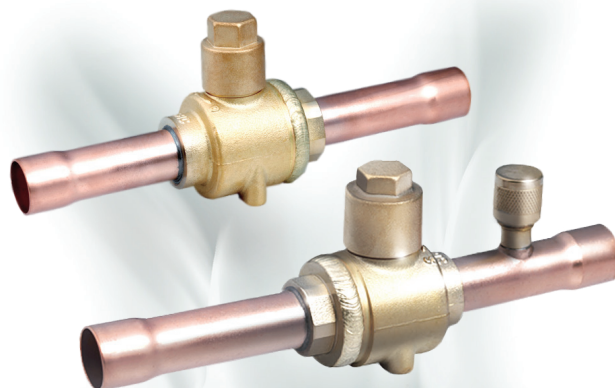




## Ball Valve

The ball valve of series SBV is applicable for commercial air conditioner, freezing or deep-freezing equipment or other refrigeration circuits in order to open and to shut off inner flow path by operating the valve stem. It can also be used as service valve for vacuum pumping and refrigerant injection etc.



### FEATURES

- STRAIGHTWAY TYPE, FULL PORT, LOW PRESSURE DROP , COST-EFFECTIVE
- OPTIONAL WITH REINFORCED SPRING
- VALVE BODY AND VALVE SEAT WITH WELDED STRUCTURE, WITH HIGH PRODUCT RELIABILITY
- ROTATE 1/4 CIRCLES FROM FULL-OPEN TO FULL-CLOSE, EASY TO OPERATE
- BIDIRECTIONAL FLOW
- ROTATION STOP AVAILABLE FOR FULL-OPEN AND FULL-CLOSE OF THE VALVE
- SPECIAL SEALING MATERIALS TO PREVENT INTERNAL LEAKAGE

### GENERAL SPECIFICATIONS

- Applicable for all common HCFC and HFC refrigerants such as: R22, R134a, R404A, R407C, R410A, R507
- Min./max. ambient temperature: -30°C to +55°C
- TS min./max.: -40°C / +120°C
- PS: 4,83 MPa
- Certifications: PED & UL



# SANHUA SBV SERIES Ball Valve

## GENERAL CHARACTERISTICS

Model	Part Number	Connections		Kv [m <sup>3</sup> /h]	PED category
		ODF			
		Ø [in]	Ø [mm]		
<b>Without access fitting</b>					
SBV(M)-A2YHSY-2-S	SBV-13001	-	6	1,66	ART 3.3
SBV(M)-A2YHSY-1-S	SBV-13002	1/4	-	1,76	ART 3.3
SBV(M)-A3YHSY-1-S	SBV-13003	3/8	10	4,35	ART 3.3
SBV(M)-A4YHSY-2-S	SBV-13004	-	12	6,73	ART 3.3
SBV(M)-A4YHSY-1-S	SBV-13005	1/2	-	7,74	ART 3.3
SBV(M)-A5YHSY-2-S	SBV-13006	-	15	9,76	ART 3.3
SBV(M)-A5YHSY-1-S	SBV-13007	5/8	16	9,02	ART 3.3
SBV(M)-A6YHSY-2-S	SBV-13008	-	18	16,2	ART 3.3
SBV(M)-A6YHSY-1-S	SBV-13009	3/4	-	14,6	ART 3.3
SBV(M)-A7YHSY-1-S	SBV-13010	7/8	22	18,9	ART 3.3
SBV(M)-A9YHSY-2-S	SBV-13011	-	28	32,6	I
SBV(M)-A9YHSY-1-S	SBV-13012	1 1/8	-	34,9	I
SBV(M)-A11YHSY-1-S	SBV-13013	1 3/8	-	54,0	I
SBV(M)-A13YHSY-1-S	SBV-13014	1 5/8	42	77,6	I
SBV(M)-A17YHSY-1-S	SBV-13015	2 1/8	54	120,3	I
SBV(M)-A17YHSY-2-S	SBV-13016	-	64	111,7	I
SBV(M)-A21YHSY-2-S	SBV-13017	2 5/8	-	295,7	I
SBV(M)-A25YHSY-2-S	SBV-13018	3 1/8	80	361,9	I
<b>With access fitting</b>					
SBV(M)-JA2YHSY-2-S	SBV-13019	-	6	1,66	ART 3.3
SBV(M)-JA2YHSY-1-S	SBV-13020	1/4	-	1,76	ART 3.3
SBV(M)-JA3YHSY-1-S	SBV-13021	3/8	10	4,35	ART 3.3
SBV(M)-JA4YHSY-2-S	SBV-13022	-	12	6,73	ART 3.3
SBV(M)-JA4YHSY-1-S	SBV-13023	1/2	-	7,74	ART 3.3
SBV(M)-JA5YHSY-2-S	SBV-13024	-	15	9,76	ART 3.3
SBV(M)-JA5YHSY-1-S	SBV-13025	5/8	16	9,02	ART 3.3
SBV(M)-JA6YHSY-2-S	SBV-13026	-	18	16,2	ART 3.3
SBV(M)-JA6YHSY-1-S	SBV-13027	3/4	-	14,6	ART 3.3
SBV(M)-JA7YHSY-1-S	SBV-13028	7/8	22	18,9	ART 3.3
SBV(M)-JA9YHSY-2-S	SBV-13029	-	28	32,6	I
SBV(M)-JA9YHSY-1-S	SBV-13030	1 1/8	-	34,9	I
SBV(M)-JA11YHSY-1-S	SBV-13031	1 3/8	-	54,0	I
SBV(M)-JA13YHSY-1-S	SBV-13032	1 5/8	42	77,6	I



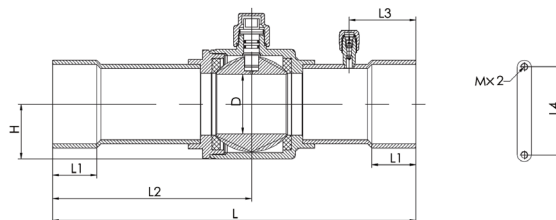


# SANHUA SBV SERIES Ball Valve

## GENERAL CHARACTERISTICS

Model	Part Number	Connections		Kv [m <sup>3</sup> /h]	PED category
		ODF			
		Ø [in]	Ø [mm]		
<b>With access fitting</b>					
SBV(M)-JA17YHSY-1-S	SBV-13033	2 1/8	54	120,3	I
SBV(M)-JA17YHSY-2-S	SBV-13034	-	64	111,7	I
SBV(M)-JA21YHSY-2-S	SBV-13035	2 5/8	-	295,7	I
SBV(M)-JA25YHSY-2-S	SBV-13036	3 1/8	80	361,9	I

## DIMENSIONS



Part number		L	L1	L2	L3	L4	D	H	M	Weight
Without access fitting	With access fitting	[mm]	[mm]	[mm]	[mm]	[mm]	[mm]	[mm]	[mm]	[kg]
SBV-13001	SBV-13019	132	8	68	31	22	14	16	M4 x 0,7	0,28
SBV-13002	SBV-13020	132	8	68	31	22	14	16	M4 x 0,7	0,28
SBV-13003	SBV-13021	132	8	68	31	22	14	16	M4 x 0,7	0,29
SBV-13004	SBV-13022	160	10	85	31	22	14	16	M4 x 0,7	0,30
SBV-13005	SBV-13023	160	10	85	31	22	14	16	M4 x 0,7	0,30
SBV-13006	SBV-13024	160	12	85	31	22	14	16	M4 x 0,7	0,30
SBV-13007	SBV-13025	160	12	85	31	22	14	16	M4 x 0,7	0,30
SBV-13008	SBV-13026	185	14	99	37	30	19	20	M4 x 0,7	0,51
SBV-13009	SBV-13027	185	14	99	37	30	19	20	M4 x 0,7	0,51
SBV-13010	SBV-13028	185	17	99	37	30	19	20	M4 x 0,7	0,52
SBV-13011	SBV-13029	208	20	112	44	38	25	25	M4 x 0,7	0,73
SBV-13012	SBV-13030	208	20	112	44	38	25	25	M4 x 0,7	0,73
SBV-13013	SBV-13031	251	25	136	44	48	32	31	M6 x 1,0	1,42
SBV-13014	SBV-13032	281	29	151	56	55	38	35	M6 x 1,0	1,90
SBV-13015	SBV-13033	305	34	167	56	74	50	46	M6 x 1,0	3,74
SBV-13016	SBV-13034	305	34	167	70	74	50	46	M6 x 1,0	3,79
SBV-13017	SBV-13035	305	37	167	56	74	60	56	M6 x 1,0	6,08
SBV-13018	SBV-13036	378	42	186,2	80	90	70	63	M6 x 1,0	8,81

